



Witheridge Church of England Primary Academy

Fore Street, Witheridge, EX16 8AH Tel: 01884 860518

admin@witheridge.devon.sch.uk



‘Encourage One Another and Build Each Other Up’

1 Thessalonians 5: 11

Thankfulness	Compassion	Perseverance	Forgiveness	Friendship	Courage
--------------	------------	--------------	-------------	------------	---------

Newsletter – Friday 7th March 2025

Dear Parents and Carers,

We have had a really exciting week at school this week! On Thursday, we celebrated World Book Day! The theme for the day this year was 'Eric Carle'. We spent the day enjoying lots of Eric Carle books such as 'The Bad-Tempered Ladybird' and 'The Very Hungry Caterpillar'. We enjoyed writing our own versions of 'The Very Busy Spider', making our own bad-tempered ladybird biscuits and finding the food that the hungry caterpillar ate around the school site. The children in FSU had great fun creating a huge caterpillar as well!



Life, Love and Learning to the Full



Building Community
Building Futures
Building Learning Power
Building Self Esteem



Please do not bring your mobile phone to school

Today, we are going to have a special visitor in school! Ian Roome, the MP for North Devon is coming to visit us! He will have a tour of the school, led by Head Girl Emma and Head Boy Cody. He will then have a grilling from our School Council, who have some very important questions to ask him about his job as an MP and how he can help schools and the people of North Devon.



We have another exciting week next week, as it is Science Week! The theme for Science Week this year is 'Life Cycles'. The children will spend some time in their classes focussing on life cycles.

On Wednesday and Thursday, it is Parents' Evening. Please make sure you book in an appointment with your child's Class Teacher. If you cannot make the Parents' Evening days, please speak to your child's Class Teacher directly to arrange an alternative time for a conversation about your child's learning. Just a reminder that there a **no Teacher led after school Clubs next week.**

On Wednesday and Thursday, before or after your appointment with your child's Class Teacher, please take the opportunity to visit the DT Week Display, which will be up in the hall on Wednesday and Thursday night.

I hope you have a lovely weekend.

All the best,

Miss Ratcliffe

Mr Wiggans Forest School News...

This week we have continued to look at British garden birds. In particular we have been looking at the nations favourite bird the robin. These birds are actually part of the thrush family and are also related to blackbirds. Most only live for just over 12 months.

The pupils have learnt about their habitat and what they eat. The pupils then made their own bird feeders to take home and hang up for small birds.

Reception class enjoyed the robin masks and making their own card robin.





Attend Today, Achieve Tomorrow
Every Day Counts!

Weekly Attendance	
Nursery 1	94%
Nursery 2	99%
Reception	94%
Year 1	93%
Year 2	95%
Year 3	95%
Year 4	94%
Year 5	91%
Year 6	96%

Reminders:

- If your child is poorly, please report their absence to the school office on 01884 860205 by 9.20am.
- All medical appointments are to be advised in advance to the school office.
- Any other absences must be applied for via an absence request form.



Attendance Update

It's great to see everyone working so hard to achieve or beating our **96.5%** target.

We can only do this if we all work together!

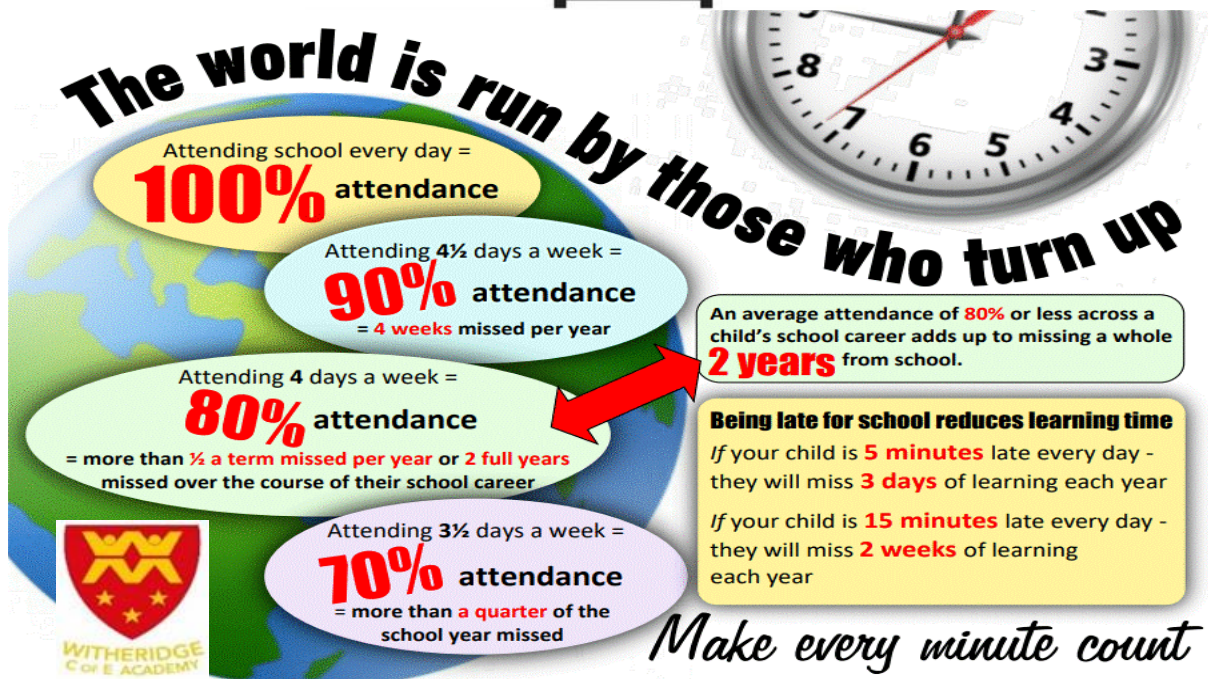
Our attendance for the week is **94.5%**

Our attendance for the year to date is **95.4%**

Together Each achieves More!



The world is run by those who turn up



Make every minute count



**Celebration Assembly
Well Done
For receiving a
Certificate of Achievement**



Class Award

Nursery – Savanna for preserving with putting on her own shoes, on the right feet.
Reception – Monty for always trying his best in all areas of his learning.
Class 1 – Elliot for engagement with learning, so fantastic multiple teachers have noticed.
Class 2 – Lily Ea for her great attitude and enthusiasm for all learning.
Class 3 – Betsy for always being kind and encouraging to others.
Class 4 – Evie for making use of every available moment to prepare for SATs.

Writer of the Week:

Reception – Amelia for always trying very hard in writing her sentences.
Class 1 – Barney for a fantastic attitude towards writing, which has led to some quick improvement.
Class 2 – Mitchell for his great World Book Day writing.
Class 3 – Archie – Super vocabulary choices in your setting description.
Class 4 – Faith for using expanded noun phrases and semi colons to write a wonderful paragraph about how wolves communicate in the wild.

Contribution:

Jack & Evelyn - Recognition for excellent behavior in Breakfast Club by the Tuesday staff, following instructions promptly, helping to clear away toys when asked, and consistently demonstrating politeness and good manners

20 Merits Award:

Class 3 – Nyiamh

40 Merits Award:

Reception – Monty
Class 1 – Georgia
Class 3 – Arthur W, Milo & Mya

House Points

Discovery 27

Endeavour 30

Enterprise 26

Voyager 34

Find us on:

Website: <https://www.teamacademytrust.com/witheridge>

Facebook: @Witheridge CofE Academy

Email: admin@witheridge.devon.sch.uk

Witheridge Blog: <https://witheridge.edublogs.org/>

TEAM MAT have job vacancies, for more information & how to apply please visit our website <https://www.teamacademytrust.com/vacancies>

Key Dates for the Spring Term 2025

Monday 10 th March	Class 3 (KS2) swimming Class 1 PE Class 4 New Group - Forest School Choir – CANCELLED due to Parents Evening
Tuesday 11 th March	Exmoor Challenge Practice Walk 2 from Black Dog Year 5 Mini Police with PC Matt Young Rocksteady SAT's Club, Times Table & Small World & Role Play - CANCELLED
Wednesday 12 th March	Class 4 PE Class 3 Group 1 Forest School Music Tuition with Mr Rogo Stay and Play Toddler Group Session in FSU at 13:45 Teacher Led Club – Gardening Club Parent Evening DT Display in School Hall Please note After School Club will be in FSU
Thursday 13 th March	Reception Class PE Reception Class Group 1 Forest School Music Tuition with Mr Rogo Drum Tuition with Steve Godfrey Board Games CANCELLED due to Parents Evening Parent Evening DT Display in School Hall Please note After School Club will be in FSU
Friday 14 th March	Class 2 PE Class 2 Group 1 Forest School Stay and Play Toddler Group Session in the School Hall at 9am Teacher Led Club – Homework Club Farm School Reception Whole Class Topic

Dates for your diary:

Spring Term 2

Monday 17 th March	Class 3 Swimming
Tuesday 18 th March	School Council Meeting Exmoor Challenge walk - Petroc College Year 5 Mini Police with PC Matt Young
Wednesday 19 th March	Toddler Group
Thursday 20 th March	KS2 PROMS Event @ The Queens Theatre - Details on Arbor Drum Lessons
Friday 21 st March	Comic Relief - Red Nose Day
Monday 24 th March	Class 3 Swimming
Tuesday 25 th March	Year 5 Mini Police with PC Matt Young
Wednesday 26 ^h March	Toddler Group Class 3 – Buckfast Abbey Trip
Thursday 27 th March	Drum Lesson

Friday 28 th March	Farm School Class 3 Group 1
Monday 31 st March	Class 3 Swimming
Tuesday 1 st April	Rocksteady Concert at 2.30 in School Hall
Wednesday 2 nd April	Toddler Group
Thursday 3 rd	Drum Lessons
Friday 4 th April	Church Easter Service
Monday 7 th April - 18 th April	Easter Holidays
Monday 21 st April	Bank Holiday Monday
Friday 25 th April	Farm School Class 3 Group 2
Sunday 27 th April	Exmoor Challenge walk – Landkey - Swimbridge
Saturday 3 rd May	Exmoor Challenge Day 2025
Monday 5 th May -	Bank Holiday Monday
Tuesday 6 th May	Church Coffee Morning
	School Council Meeting
Wednesday 7 th May -	Whole Class photos
Friday 9 th May	Farm School Class 3 Group 3
Monday 12 th May - 15 th May	Year 6 SATs Week
Sunday 18 th May - 23 rd May	Year 6 Residential to Adventure Bude
Monday 26 th May - 30 th May	May half Term
Monday 2 nd June	Non Pupil Day
Tuesday 22 nd July	Last Day of Summer Term
Wednesday 23 rd July	Non Pupil Day

These dates are intended as a guide and you will be notified of any changes.

SCHOOL TERM DATES 2024 / 2025		
Autumn Term	Spring Term	Summer Term
First Day 5th September 2024	First Day 7th January 2025	First Day 22 nd April 2025
Half term 28th October – 1st November 2024	Half term 17th – 21st February 2025	Bank Holiday 5 th May 2025
Last Day 20th December 2024	Last Day 4th April 2025	Half Term 26 th - 30 th May 2025
		Last Day 22 nd July 2025

Non-pupil days and occasional holiday days: 3rd & 4th September 2024, 6th January 2025, 2nd June 2025 & 23rd July 2025

Nursery - unfunded places

From 22nd April 2025 - 2 Year olds will increase to £6.95 and 3 Year olds will increase to £5.50.

From 1st Sept 2025 2 Year olds will further increase to £7.42, 3 Year olds will stay @ £5.50.

This will bring the cost of unfunded hours in line with the DCC funded hours.

Please ensure that codes are input in time so that all those eligible for free funding receive their hours.

School Meals

From 22nd April 2025 - KS2 meals will increase to £2.58, KS1 free (UIFSM) and Nursery £2.00

Team Meal Menu – Spring Term 2025 Week 3 - W/B 10 th March 2025	
Monday	Cheese & Tomato Pizza V – Broccoli & Cheese Bake Potato Wedges, Vegetables & Baked Beans Pancake Monday (various fruit toppings)
Tuesday	Meatballs & pasta V – No Meat Meatballs & Pasta Crusty Bread, Peas & Sweetcorn Artic Roll & Fresh Fruit
Wednesday	Roast of the Day (Gammon) V – Cheese & Onion Rolls Roast Potatoes, Seasonal Veg & Gravy Angel Delight & Fruit
Thursday	Hunters Chicken V – Hunters Quorn Steak Rice & Mixed Vegetables Sticky Toffee Pudding with Custard
Friday	Fish Fingers V – Veggie Fingers Golden Fries, Peas & Baked Beans Shortbread Biscuit

Also available every day:
Jacket potato with Tuna, Cheese or Beans
Yoghurt or Fresh Fruit

Cost of School lunches:

Nursery – £1.95 per meal.

Reception & KS1 children –

Universal Infant Free School Meals,

KS2 children £2.55 per meal.

Payment to be made via The Arbor App

A gentle reminder that
we are a

NUT FREE SCHOOL

and we have a number
of students, staff and

visitors with serious nut allergies.

With this in mind, could we politely ask
that NO products containing nuts be
sent into school.



If you have any questions in relation to
this, please contact the School Office.

Thank you for your consideration and
for safeguarding our students.

Parents Evening

Reminder to book your appointment



We will be holding parent/teacher meetings on:

FSU (Nursery and Reception) - Mrs North - Wednesday 12th March & Thursday 13th March - 9am-6pm

Class 1 (Year 1) - Mr Booth - Wednesday 12th March & Thursday 13th March - 3:40-6pm

Class 2 (Year 2) - Miss Ratcliffe and Mrs Lewis - Wednesday 12th March & Thursday 13th March - 3:40-6pm

Class 3 (Year 3 and Year 4) - Mrs Nott - Wednesday 12th March 3:40-6pm & Thursday 13th March - 1:30-6pm

Class 4 (Year 5 and Year 6) - Mr Manning - Wednesday 12th March & Thursday 13th March - 3:40-6pm

You will be able to book your 10-minute appointment with your child's Class Teacher from **NOW! Friday 28th February**. Please be aware that appointments are allocated on a first come, first served basis.

Please note - **there will be no teacher-led clubs during Parents' Evening week**. A refund will be issued for any overpayments made. After School Club will still run as normal all week.

PE and Forest School Days at Witheridge – Spring Term 2

Monday - Class 3 (KS2) Swimming – Consent on Arbor
Class 1 PE

Class 4 **New Group! Forest School** (Scarlett, Josh, Mason, Lily-Sue, Bella, Amy, Betsy, Alfie & Harry)



Wednesday - Class 4 PE

Class 3 Forest School Group 1 (Mya, Hunter, Ivy, Arthur C, Lola, Jack Ea, Olly, Archie, Mia, Amelia & Linden)



Thursday – Reception PE

Reception Group 1 Forest School (Monty, Imogen, Rosalie, Phoebe, Bille, Dylan & Maeve)



Friday – Class 2 PE

Class 2 Group 1 Forest School (Ava, Zoey, Keeley, Lily Ea, Archie, Mitchell, Noah, Monica & Libby)

All PE and Forest School Session take place in the afternoon.

Please ensure your child has the correct kit on the correct day! Many thanks

TEAM Multi-Academy Trust Vacancies



Life, Love and Learning to the Full

Working in partnership with



Part of **TEAM MULTI-ACADEMY TRUST**

APPLY NOW DIRECT WITH **mynewterm**

For more information and how to apply directly with My New Term please visit our website

<https://www.teamacademytrust.com/vacancies> or <https://mynewterm.com>

We currently have 1 vacancy available at Team Multi-Academy Trust:

[Meal Time Assistant at Umberleigh Primary Academy.](#)





PTFA

Parents
Teachers
Friends
Association

Our next event is the Bingo Night!
We are also looking for donations of raffle prizes or bottles of wine and prosecco for the bingo night.

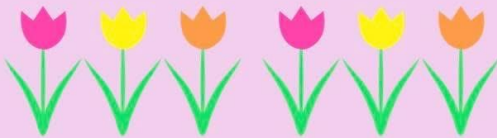
Please leave donations at the School Office or give to Cat Seymour (Noah's Mum) or Susie Kingdom (Abbie & Mitchell's mum).

Mother's Day Gift Shop!

A convenient way to buy a gift for the amazing women in your life.

£4 a gift/ticket (to be bought in advance) – Once a ticket is purchased your child will get the opportunity to choose a gift for their mum, grandparent, guardian or any amazing women.

This will then be wrapped and returned to your child to bring home in time for Mother's Day.



More than 1 ticket can be purchased per child.

Please come and join us for a chat about our future fundraising events.
It would be great to hear some ideas or suggestions from you all.
Everyone is welcome you do not have to be part of the PTFA to attend.

Location will be confirmed asap

Thanks in Advance!
The Witheridge PTFA 😊

JOIN US FOR

BINGO NIGHT

SATURDAY 22ND MARCH

WITHERIDGE PARISH HALL
(EX16 8AG)

Doors open 6.45 Eyes down 7.30
GREAT PRIZES TO BE WON INCLUDING ROAST DINNERS AND BREAKFASTS!

Cash only
Raffle and Tuck shop including coffee, tea, and soft drinks.

Raising money for Witheridge C of E Academy P.T.F.A.
Charity No: 1079365

Made with PosterMyWall.com

WITHERIDGE C OF E
ACADEMY PTFA

March 25th
7pm
Location TBC

PTFA MEET UP

EVERYONE WELCOME

Come along to our PTFA meet up to find out details for our next fundraising events.

New ideas and suggestions are always welcome.

Witheridgeptfa@gmail.com

All proceeds for charity



WITHERIDGE MOTOR SHOW

In aid of the Royal Devon Hospitals

Charity
SUNDAY 24th AUGUST
 Witheridge Sports club EX16 8AH
 11.00am-4.00pm (free public entry)
£7 per car
 Show car entry from 10.00am
 Classic or modern all welcome
 car boot pitch-£10

bookings
 BASC'S-MR W.L.GRIFFITHS
 SORT CODE-07-01-16
 ACC NO-47602207



Please use reg number as your reference
 Will be added to our list.
 please message us on FB for any more information
 Full T&C are on our FB page

WITHERIDGMOTORSHOW



Big Al and the Wild Strawberries

Tickets available at Two Moors Cafe or online at We Got Tickets.com
wegottickets.com/event/647468/

Witheridge Parish Hall
On Saturday 26th April 2025

Doors open from 7:30pm
 £7.50 a ticket
 Licenced bar with card machine



TAE KWON-DO WITHERIDGE

Try something new in 2025

Taekwondo is a dynamic and disciplined martial art that originated in Korea. Known for its powerful kicks and agile movements. It also develops physical strength and flexibility and cultivates mental focus and self-discipline. The sport is not just about self-defense; it's a way of life that promotes respect, perseverance, and harmony.

Witheridge Village Hall
Thursdays 6pm - 7pm
pop in and see us.



ROMAR
SPORTS

EASTER FOOTBALL HOLIDAY CLUB

Join us for a fun filled
Easter of football,
games, competitions & prizes
Girls & Boys / All abilities
Ages 5 - 15 years / 9am - 4pm



7 hours of fun for £30
per day

TARMA LEISURE CENTRE 4G
Barnstaple, North Devon EX31 2AP

Full timetable available on our website
For more info email e: info@romarsports.com



Coffee Morning

Saturday 8th March
10 am -12 pm
Church of St John the Baptist,
Witheridge



Raffle,
cake and produce stall and
books and bric-a-brac

Ham and cheese croissants, coffee, tea and
biscuits available



WIN!

CALLING ALL CLIMATE HEROES!

GET CREATIVE AND HELP SAVE THE PLANET!

Cartoon Network Climate Champions is launching an exciting competition to find, fresh, fun ideas to help tackle climate change.

EVERY IDEA COUNTS!

HOW TO ENTER:

- 1. WRITE DOWN YOUR MOST CREATIVE IDEA TO SAVE THE PLANET.**
- 2. SUBMIT VIA WWW.CARTOONNETWORKCLIMATECHAMPIONS.COM**

OR SCAN TO ENTER

For more Climate Champions inspiration download our App

Available on the App Store and Google Play.

WIN!

CALLING ALL YOUNG CLIMATE HEROES!

STEP UP TO CLIMATE CHANGE!

Cartoon Network Climate Champions is launching an exciting competition to find, fresh, fun ideas to help tackle climate change one step at a time! If we all do something big or small, we can make a difference.

HOW TO ENTER:

Write down your most creative idea to save the planet... Just a sentence will do! Every idea counts! Submit via www.cartoonnetworkclimatechampions.com

OR SCAN TO ENTER

WIN!

A fun filled weekend in LIVERPOOL to see your idea being transformed into a giant sculpture using recycled materials and displayed on a special Climate Bench in Liverpool's Springfield Park.

The Climate Bench will be a place of honour where everyone can reflect on our shared commitment to the planet.

For more Climate Champions inspiration download our App

Available on the App Store and Google Play.

STUDY SMART
Free Online Courses

Aspire Education

ncfe. | cache

Education & Skills Funding Agency



Fully Funded School Support Course

Available in Levels 1, 2 & 3

*Please go to our website for more detailed information.

6 Week Course
Mon - Fri
Daily sessions
1st session 9:30 - 11:30am
2nd session 12:30 - 2pm

www.studysmartuk.online

We are looking to fill 150+ School Support vacancies in local schools (e.g. SEN Support, Behaviour Mentors, 1-1 Classroom Support, Cover Supervisors etc). These roles are available in both full time and part time positions.

Please go to our website address given above, or scan the QR code for more information.

This is a 6 week course, full time, intensive course, with online guided learning sessions within school hours.
If you are earning less than £23,500 per annum or are in receipt of any benefits, you will be eligible for a fully funded place with us.



WE NEED YOUR INPUT!

Are you a parent or guardian of a school-age child?
Help us understand **your perspective on mental health support in schools!**

WHAT IS THIS ABOUT?

We are conducting a study to explore parents' and other caregivers' perceptions of the provision of mental health support within the Whole School Approach (WSA), as well as their involvement in mental health support provided in schools.

Whole-school mental health approaches involve strategies and practices that support the mental health and wellbeing of the entire school community, including students, staff, and families, through preventative and universal support measures.

Your feedback will help improve mental health support for students and families.

HOW CAN YOU HELP?

Complete a **short 20-minute anonymous online survey**.
Share your valuable experiences and insights.

Your participation is voluntary, and all responses will remain confidential.

WHY PARTICIPATE?

Your voice matters! This research aims to:

- Support schools in **better engaging parents**.
- Help **reduce barriers to mental health support**.
- Foster a **healthier, more supportive school environment** for children.

Ready to Participate? Scan Here to Take the Survey



University of Exeter

For questions or more information, contact: Anais Ng at yn276@exeter.ac.uk

Any articles, which appear in the school newsletter, that have not been organised by or on behalf of the school, have not been verified by TEAM Multi-Academy Trust as to the suitability for children. The news items are for parent information only

